

The Adjustable Lowering Stop Avoiding abrasion on the bottom side of forks and other truck attachment

The problem:



Wear of tyres and elongation of chains lead to a constant lowering of the forks. If the forks touch the ground while the truck is driving, abrasion on the bottom side of the forks will occur.



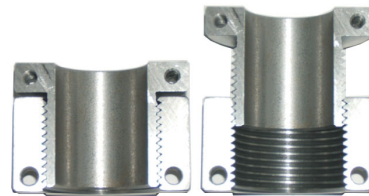
As a rule this means additional investment for keeping your trucks fully efficient.

The solution:



Compatible to various masts of several manufacturers

Weatherproof and wear-resistant material (CC332G)



Segmented construction for easy and quick retrofitting



Adjustable, range differs depending on model

The result:

Forks do no longer touch the ground, abrasion on the bottom side of the forks is being avoided

